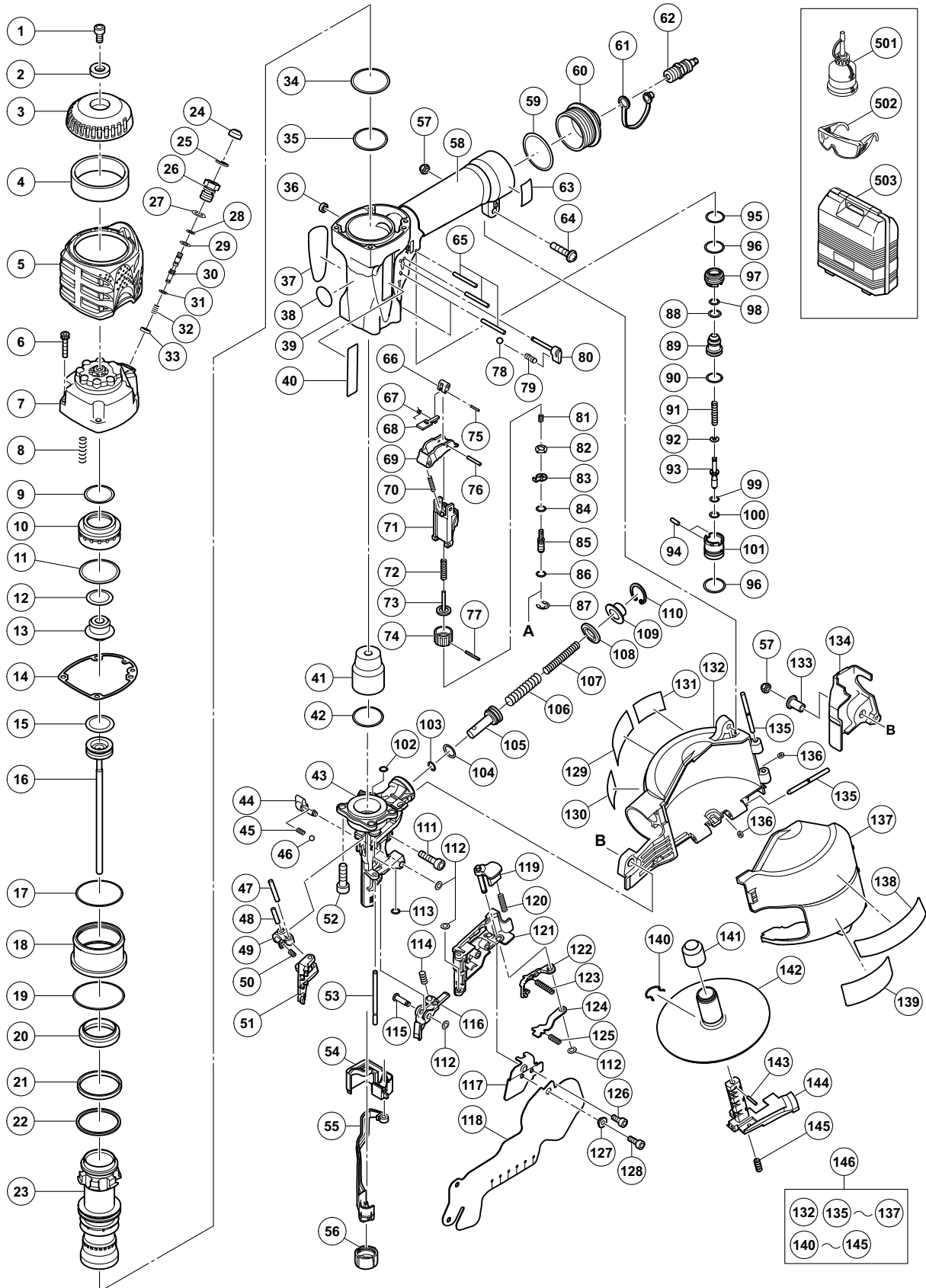


## PNEUMATIC TOOL PARTS LIST

**HIGH PRESSURE COIL NAILER**  
**Model NV 65HMC**

**2009·12·11**  
**(E1)**



**PARTS**

NV 65HMC

ITEM NO.	CODE NO.	DESCRIPTION	NO. USED	REMARKS
1	980-046	SEAL LOCK HEX. SOCKET HD. BOLT M5 X 10	1	
2	887-026	PLATE	1	
3	887-025	TOP COVER	1	
4	886-658	MUFFLER	1	
5	886-423	PROTECTOR	1	
6	881-262	NYLOCK BOLT M5 X 25	4	
7	886-421	EXHAUST COVER	1	
8	886-418	HEAD VALVE SPRING	8	
9	883-770	O-RING	1	
10	886-416	HEAD VALVE	1	
11	886-417	O-RING	1	
12	883-774	RING	1	
13	886-419	EXHAUST RUBBER	1	
14	883-789	GASKET	1	
15	883-751	PISTON O-RING	1	
16	886-402	PISTON (H)	1	
17	877-126	CYLINDER O-RING (D)	1	
18	886-420	SEPARATER	1	
19	990-067	O-RING (1AS-50)	1	
20	883-768	VALVE RUBBER	1	
21	883-956	CYLINDER BUMPER	1	
22	883-955	CYLINDER WASHER	1	
23	886-415	CYLINDER	1	
24	884-334	KNOB	1	
25	968-643	RETAINING RING (E-TYPE) FOR D4 SHAFT	1	
26	885-027	VALVE BUSHING	1	
27	987-105	O-RING (S-10)	1	
28	881-715	O-RING (S3)	1	
29	873-093	O-RING (1AP-3)	1	
30	885-028	PLUNGER	1	
31	878-607	PLUNGER O-RING	1	
32	881-900	SPRING	1	
33	884-338	VALVE PACKING	1	
34	931-835	O-RING (P-36)	1	
35	986-374	O-RING (P-32)	1	
36	886-669	FEEDER SHAFT RING	1	
37		HITACHI LABEL (B)	1	
38	883-513	WARNING LABEL (A)	1	
39	887-173	BODY ASS'Y	1	INCLUD. 58
40	886-342	HITACHI PLATE	1	
41	885-195	PISTON BUMPER	1	
42	980-717	O-RING (S-38)	1	
43	886-403	NOSE	1	
44	886-409	CHANGE KNOB	1	
45	882-923	LOCK SPRING	1	
46	959-148	STEEL BALL D3.175 (10 PCS.)	1	
47	880-659	NEEDLE ROLLER	1	
48	949-498	ROLL PIN D4 X 18 (10 PCS.)	1	
49	883-144	FEEDER ARM (B)	1	
50	883-143	FEEDER SPRING	1	

**PARTS**

NV 65HMC

ITEM NO.	CODE NO.	DESCRIPTION	NO. USED	REMARKS
51	886-406	FEEDER (A)	1	
52	880-675	NYLOCK HIGH TENSION BOLT M6 X 20	4	
53	883-755	NAIL GUIDE SHAFT	1	
54	883-761	PUSHING LEVER COVER (A)	1	
55	887-024	PUSHING LEVER (A)	1	
56	886-650	NOSE CAP	1	
57	877-371	NYLON NUT M5	2	
58		GRIP RUBBER (A)	1	SUPPLIED WITH ITEM NO. 601, 602
59	880-183	O-RING (I.D 37.2)	1	
60	886-426	CAP (GOLD)	1	
61	877-914	DUST CAP	1	
62	883-135	AIR PLUG L-PT 1/4	1	
63		CAUTION PLATE (C)	1	
64	887-315	MACHINE SCREW (W/WASHER) M5 X 25 (BLACK)	1	
65	949-865	ROLL PIN D3 X 28 (10 PCS.)	4	
66	886-626	TRIGGER PIECE (C)	1	
67	886-627	TRIGGER SPRING	1	
68	886-625	TRIGGER ARM (C)	1	
69	886-623	TRIGGER	1	
70	883-759	TRIGGER SPRING	1	
71	886-047	PUSHING LEVER GUIDE	1	
72	882-892	PUSHING LEVER SPRING	1	
73	882-891	PUSHING LEVER (C)	1	
74	882-889	ADJUSTER	1	
75	886-228	ROLL PIN D1.6 X 10	1	
76	881-951	ROLL PIN D2.5 X 16	1	
77	880-093	ROLL PIN D2 X 16	1	
78	959-148	STEEL BALL D3.175 (10 PCS.)	1	
79	882-923	LOCK SPRING	1	
80	886-727	LOCK KNOB	1	
81	882-890	ADJUSTER SPRING	1	
82	884-973	ADJUSTER PLATE (C)	1	
83	882-886	ADJUSTER PLATE (A)	1	
84	981-317	O-RING (S-4)	1	
85	882-888	PUSHING LEVER (B)	1	
86	872-822	O-RING (S-5)	1	
87	872-971	RETAINING RING (E-TYPE) FOR D3 SHAFT	1	
88	883-104	O-RING (P9-U)	1	
89	883-101	VALVE PISTON	1	
90	878-764	O-RING (1AP-11)	1	
91	883-103	PLUNGER SPRING	1	
92	883-405	O-RING (I.D 1.8)	1	
93	886-621	PLUNGER	1	
94	949-778	PIN D2 X 8 (10 PCS.)	2	
95	876-319	O-RING (S-14)	1	
96	876-031	O-RING (S-16)	2	
97	886-042	VALVE BUSHING (B)	1	
98	883-105	O-RING (P7-U)	1	
99	873-407	O-RING (1AP-5)	1	
100	997-218	O-RING (S-6)	1	

**PARTS**

NV 65HMC

ITEM NO.	CODE NO.	DESCRIPTION	NO. USED	REMARKS
101	883-099	VALVE BUSHING (A)	1	
102	873-093	O-RING (1AP-3)	1	
103	872-645	O-RING (P-9)	1	
104	877-763	FEED PISTON O-RING (I.D. 14)	1	
105	883-756	FEED PISTON	1	
106	883-757	FEED SPRING (A)	1	
107	883-758	FEED SPRING (B)	1	
108	885-681	BUMPER	1	
109	883-098	FEED PISTON COVER	1	
110	983-748	RETAINING RING FOR D24 HOLE	1	
111	949-757	HEX. SOCKET HD. BOLT M5 X 20 (10 PCS.)	1	
112	880-319	SHAFT RING	4	
113	874-436	O-RING (P-4)	1	
114	886-412	SPRING	1	
115	886-410	NOSE SHAFT	1	
116	886-652	NOSE PIECE	1	
117	883-784	NAIL GUIDE COVER	1	
118	886-405	COVER	1	
119	886-107	GUIDE LOCK	1	
120	880-446	SPRING	1	
121	886-404	NAIL GUIDE	1	
122	883-783	NAIL STOPPER (A)	1	
123	886-451	NAIL STOPPER SPRING	1	
124	882-680	NAIL STOPPER (B)	1	
125	880-494	STOPPER SPRING	1	
126	880-413	NYLOCK HEX. SOCKET HD. BOLT M4 X 10	1	
127	882-881	SLEEVE (B)	1	
128	880-630	NYLOCK HEX. SOCKET HD. BOLT M4 X 12	1	
129	887-175	WARNING LABEL	1	
130		LABEL (D)	1	
131	887-174	WARNING LABEL	1	
132	886-428	MAGAZINE	1	
133	882-907	SLEEVE	1	
134	883-762	PUSHING LEVER COVER (B)	1	
135	881-825	PIN	2	
136	877-826	FEEDER SHAFT RING	2	
137	883-926	MAGAZINE COVER	1	
138		CAUTION PLATE (B)	1	
139		NAME PLATE	1	
140	880-398	RATCHET SPRING	1	
141	881-003	HOLDER CAP (A)	1	
142	885-683	NAIL HOLDER	1	
143	878-791	ROLL PIN D2.5 X 12	1	
144	882-905	HOLDER SHAFT	1	
145	881-826	SPRING	1	
146	887-314	MAGAZINE ASS'Y	1	INCLUD. 132, 135-137, 140-145



